

## Report No. 18: Week ending 2 September 2018

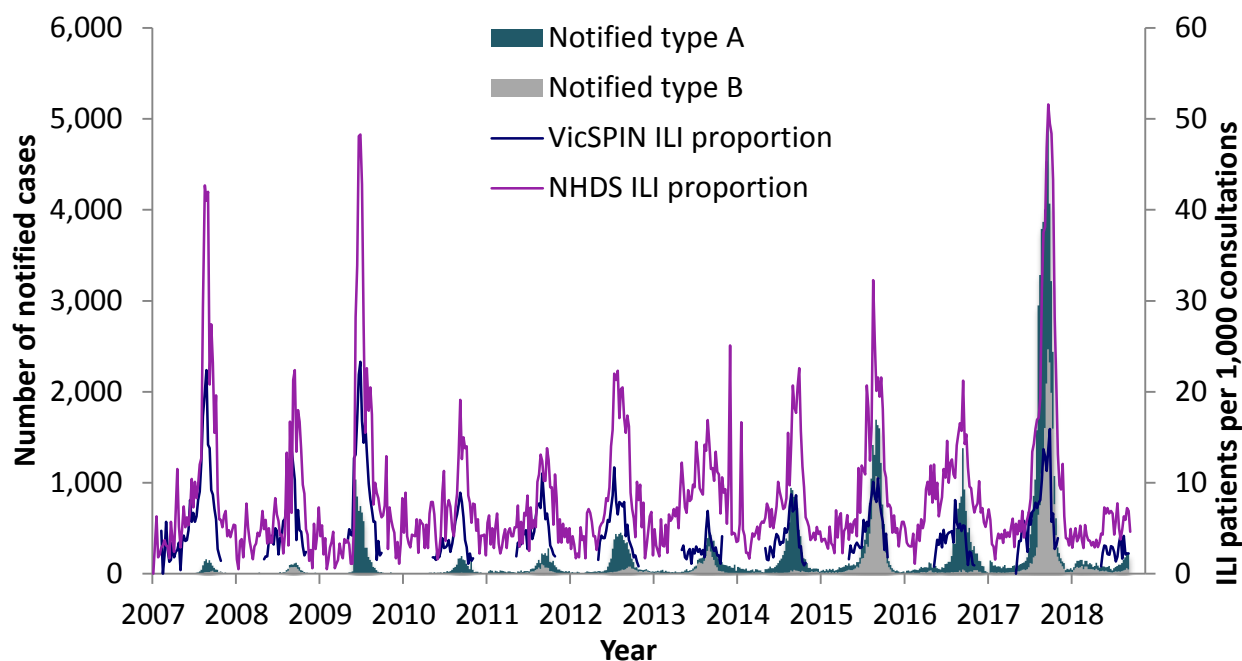
### Overview: The 2018 influenza season so far

**Influenza-like illness** activity has fluctuated around the threshold between baseline and average since late July, with a rate **within baseline levels this week**.

The number of notified cases has increased in each of the last four weeks, of which 74% have been type A (median age: 36 years) and 22% type B (median age: 39 years). However, the influenza season to date is still very quiet, with the 3,900 cases notified year-to-date 84% lower than the 25,012 notified at the same time in 2017.

Fourteen swabs were received from VicSPIN this week, of which one was positive for influenza A(H1) and one for influenza C. Picornavirus remains the most commonly detected respiratory virus.

*Figure 1. Routinely notified influenza cases and VicSPIN and National Home Doctor Service (NHDS) ILI consultation proportions, Victoria, 2007-2018*



### National Home Doctor Service (Victoria)

- The ILI proportion for the week was 4.6 ILI cases per 1,000 patients seen (Figure 1), remaining within the baseline activity threshold.

## Victorian Sentinel Practice Influenza Network

- The total influenza-like illness (ILI) proportion measured by VicSPIN was within baseline activity levels with 2.2 ILI cases per 1,000 patients seen this week. (Figures 1 & 2).
- Thirteen swabs were received from VicSPIN this week, of which one was positive for influenza A(H1) and one for influenza C. Picornavirus remains the most commonly detected respiratory virus.

Table 1. Summary of reporting from general practice sentinel sites, week ending 2 September 2018

	Total	Year-to-date
Number (%) of general practitioners notifying	81 (81%)	91 (91%)
Total patients seen	5,531	111,022
Total patients with ILI	12	279
Consultation rate for ILI (per 1,000 patients)	2.2	2.5
Number of specimens received	13	213
Number (%) positive for influenza	2 (15%)	12 (6%)

Figure 2. VicSPIN ILI consultation proportions, Victoria, 2018

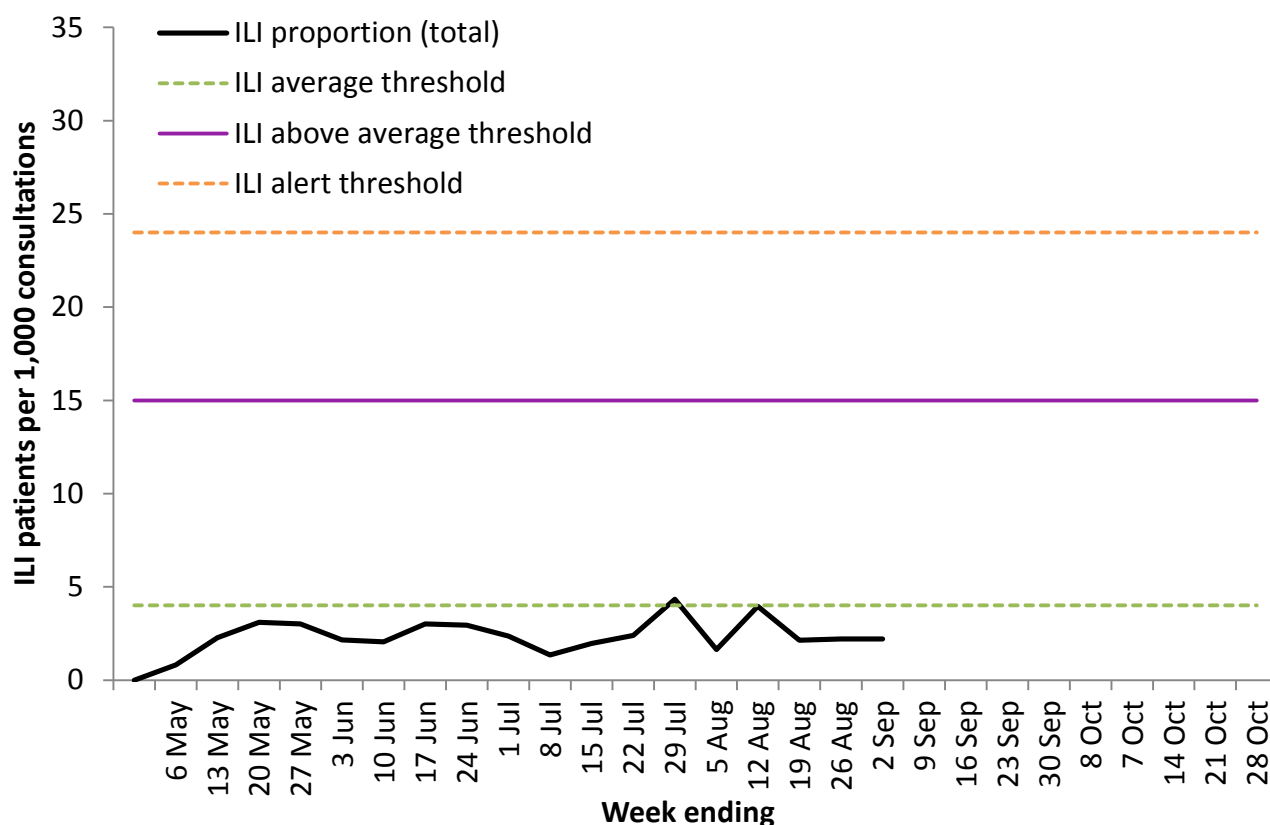
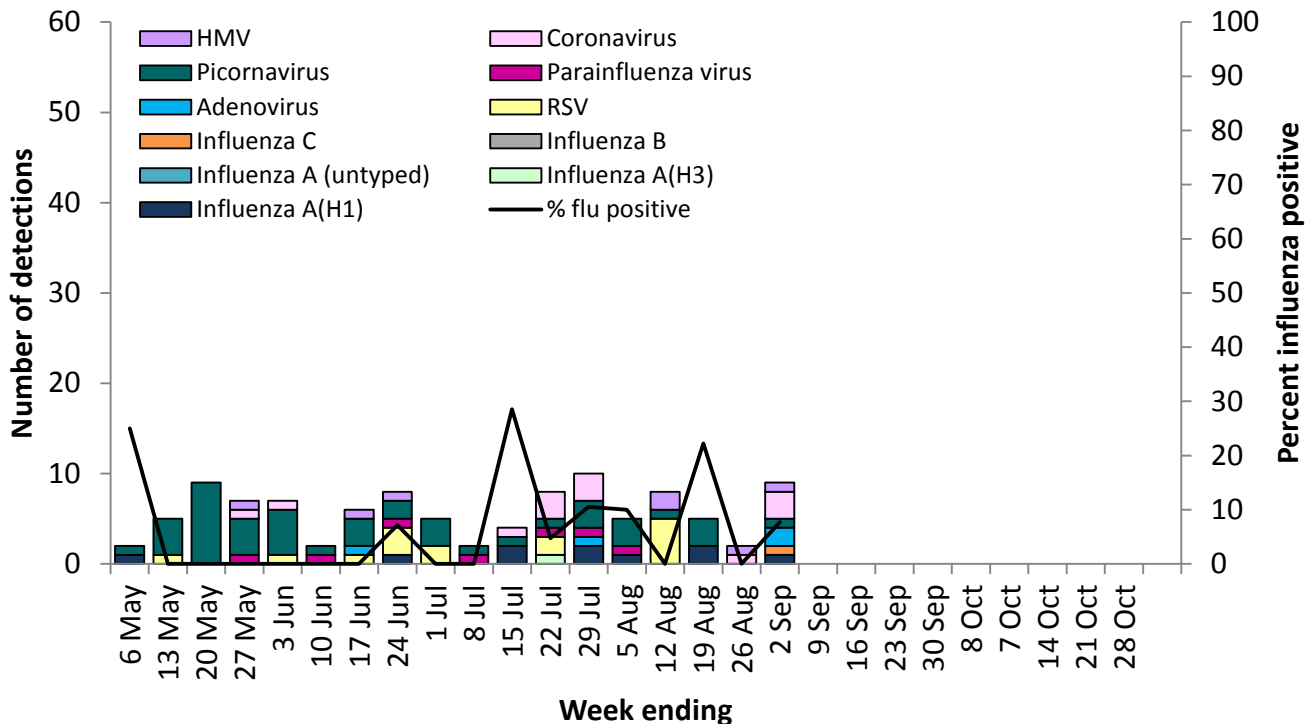


Figure 3. VicSPIN respiratory virus detections and percent influenza positive, Victoria, 2018



## Observations from other influenza surveillance systems

### Notified cases of laboratory confirmed influenza

- A total of 3,900 cases of laboratory confirmed influenza have been processed so far in 2018 compared with 25,012 in 2017, an 84% decrease (Figure 1).
- The number of notified cases has increased in each of the last four weeks, of which 74% have been type A (median age: 36 years) and 22% type B (median age: 39 years).

### World Health Organization Collaborating Centre for Reference and Research on Influenza

- The strains included in the 2018 quadrivalent influenza vaccine are: A/Michigan/45/2015 (H1N1)pdm09-like virus; A/Singapore/INFIMH-16-0019/2016 (H3N2)-like virus; B/Phuket/3073/2013-like virus with the quadrivalent vaccine including B/Brisbane/60/2008-like virus as well.
- One Victorian isolate was strain-typed by the WHO as A/Michigan/45/2015 (H1N1)pdm09.
- No isolate has shown resistance to zanamivir, among the 212 Australian isolates tested so far in 2018.