

Report No. 25: Week ending 21 October 2018

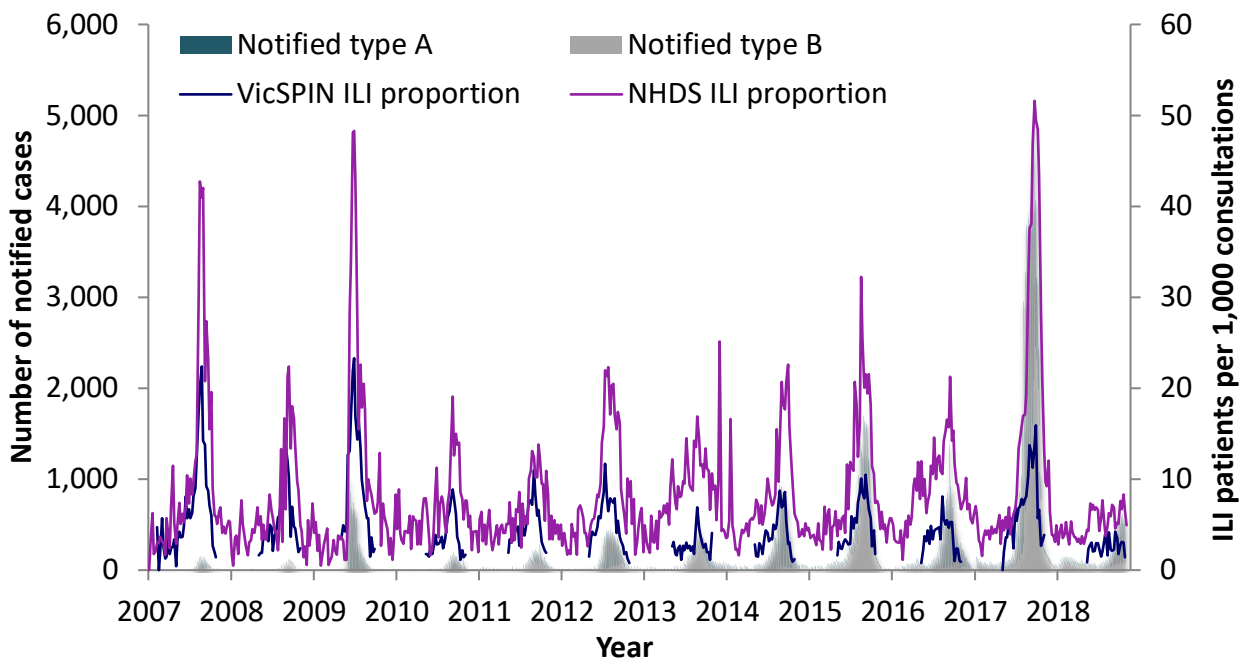
Overview: The 2018 influenza season so far

Influenza-like illness activity decreased further within the **baseline** threshold.

After peaking at 622 last week, the number of **notified cases of laboratory confirmed influenza decreased 16%** to 524 cases. The number of laboratory confirmed influenza cases processed to date in 2018 is **83% lower than for the same time in 2017**.

Eight swabs were received from VicSPIN this week, of which **three (38%) were positive for influenza**: one influenza A(H1) and two influenza A(H3).

Figure 1. Routinely notified influenza cases and VicSPIN and National Home Doctor Service (NHDS) ILI consultation proportions, Victoria, 2007-2018



National Home Doctor Service (Victoria)

- The ILI proportion for the week decreased to 4.9 ILI cases per 1,000 patients seen (Figure 1), in the baseline activity threshold.

Victorian Sentinel Practice Influenza Network

- The total influenza-like illness (ILI) proportion measured by VicSPIN was below baseline activity levels with 1.4 ILI cases per 1,000 patients seen this week. (Figures 1 & 2).
- Three (38%) of eight swabs received this week, were positive for influenza: one for type A(H1) and two for type A(H3) (Figure 3). Three swabs (38%) were positive for picornavirus.

Table 1. Summary of reporting from general practice sentinel sites, week ending 21 October 2018

	Week	Year-to-date
Number (%) of general practitioners notifying	79 (81%)	
Total patients seen	5,546	153,472
Total patients with ILI	8	397
Consultation rate for ILI (per 1,000 patients)	1.4	2.6
Number of specimens received	8	298
Number (%) positive for influenza	3 (38%)	35 (12%)

Figure 2. VicSPIN ILI consultation proportions, Victoria, 2018

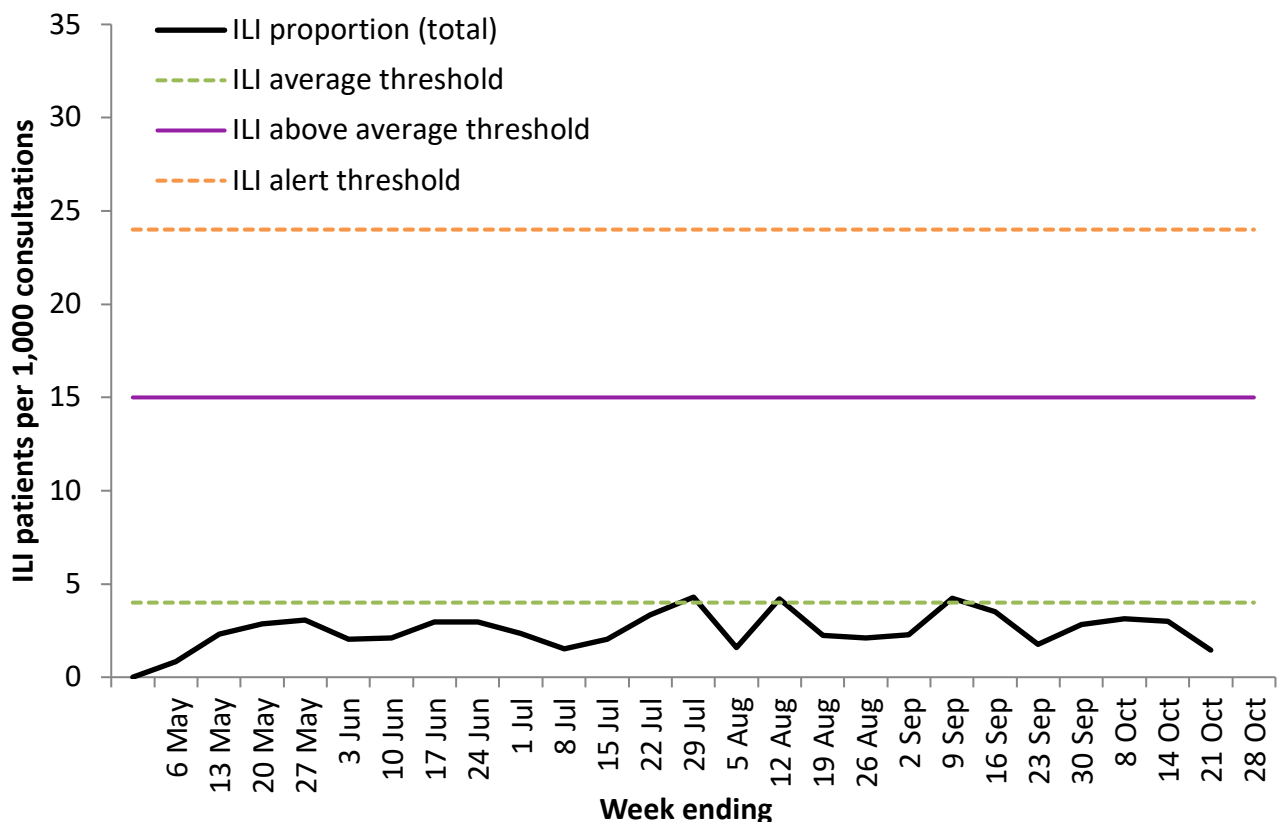
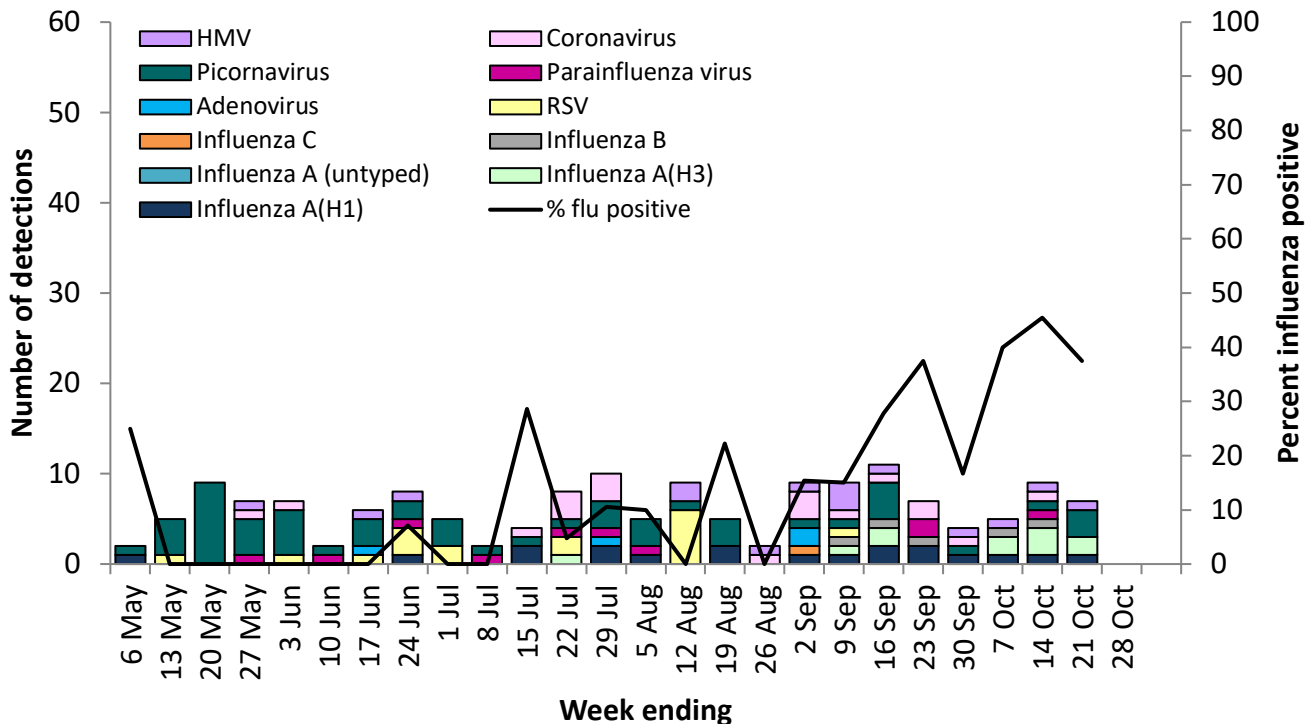


Figure 3. VicSPIN respiratory virus detections and percent influenza positive, Victoria, 2018



Observations from other influenza surveillance systems

Notified cases of laboratory confirmed influenza

- There were 524 cases of influenza notified last week, a decrease of 16% on the 622 cases notified in the previous week.
- A total of 7,764 cases of laboratory confirmed influenza have been processed so far in 2018 compared with 46,022 in 2017, an 83% decrease (Figure 1).
- Year to date 74% have been type A (median age: 36 years) and 26% type B (median age: 43 years). In the last four weeks, 86% have been type A (median age: 36 years) and 14% type B (median age: 40 years).

World Health Organization Collaborating Centre for Reference and Research on Influenza

- The strains included in the 2018 quadrivalent influenza vaccine are: A/Michigan/45/2015 (H1N1)pdm09-like virus; A/Singapore/INF16H-16-0019/2016 (H3N2)-like virus; B/Phuket/3073/2013-like virus with the quadrivalent vaccine including B/Brisbane/60/2008-like virus as well.
- Sixteen Victorian isolates have been strain-typed by the WHO to date: thirteen as A/Michigan/45/2015 (H1N1)pdm09 and two as A/Singapore/INF16H-16-0019/2016 (H3N2)-like virus.
- No isolate has shown resistance to zanamivir, among the 540 Australian isolates tested so far in 2018.