

## Report No. 15: Week ending 12 August 2018

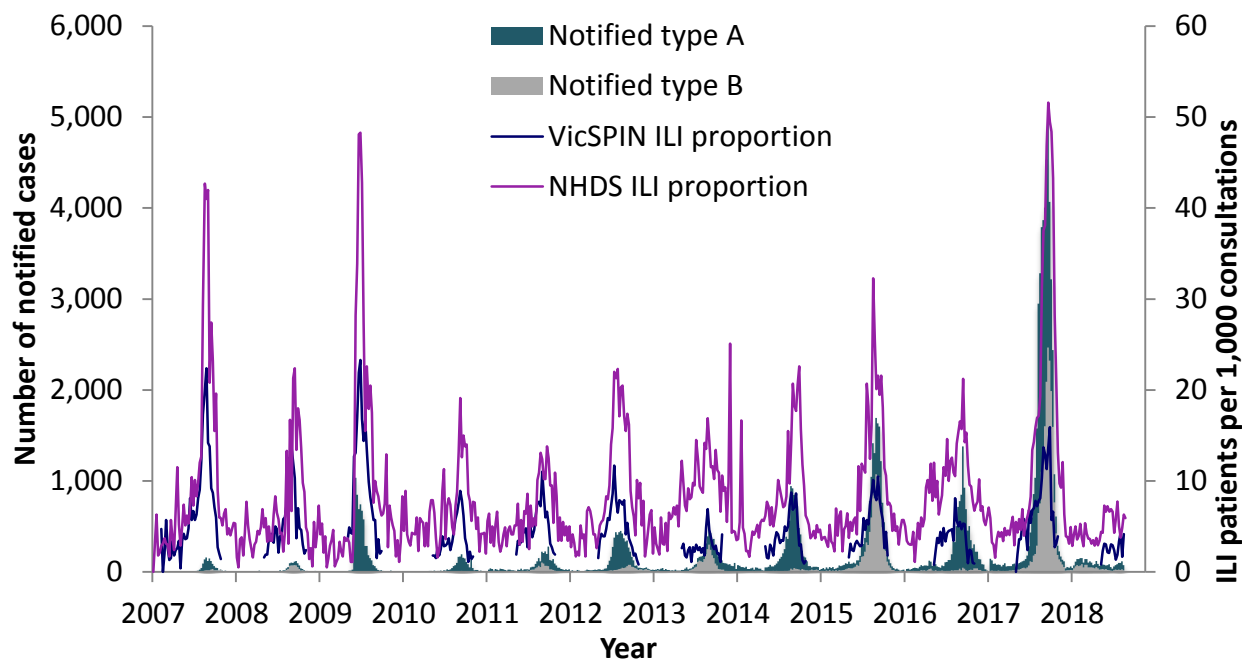
### Overview: The 2018 influenza season so far

Influenza-like illness activity is fluctuating around the **threshold between baseline and average**.

A total of 3,153 cases of laboratory confirmed influenza have been processed so far in 2018 compared with 13,294 in 2017, a 76% decrease. Cases notified year-to-date have been type A (58%) and type B (42%). Type A cases had a median age of 41 years and type B cases median age 46 years.

Seventeen swabs were received from VicSPIN this week, of which none were positive for influenza A. Picornavirus remains the most commonly detected respiratory virus.

*Figure 1. Routinely notified influenza cases and VicSPIN and National Home Doctor Service (NHDS) ILI consultation proportions, Victoria, 2007-2018*



### National Home Doctor Service (Victoria)

- The ILI proportion for the week was 6.3 ILI cases per 1,000 patients seen (Figure 1), remaining within the baseline activity threshold.

### Victorian Sentinel Practice Influenza Network

- The total influenza-like illness (ILI) proportion measured by VicSPIN increased to average activity with 4.1 ILI cases per 1,000 patients seen this week. (Figures 1 & 2).
- Seventeen swabs were received from VicSPIN this week, of which none were positive for influenza A. Picornavirus remains the most commonly detected respiratory virus.

Table 1. Summary of reporting from general practice sentinel sites, week ending 12 August 2018

	Total	Year-to-date
Number (%) of general practitioners notifying	86 (86%)	92 (92%)
Total patients seen	5,801	93,323
Total patients with ILI	24	239
Consultation rate for ILI (per 1,000 patients)	4.1	2.6
Number of specimens received	17	181
Number (%) positive for influenza	0 (0%)	8 (4%)

Figure 2. VicSPIN ILI consultation proportions, Victoria, 2018

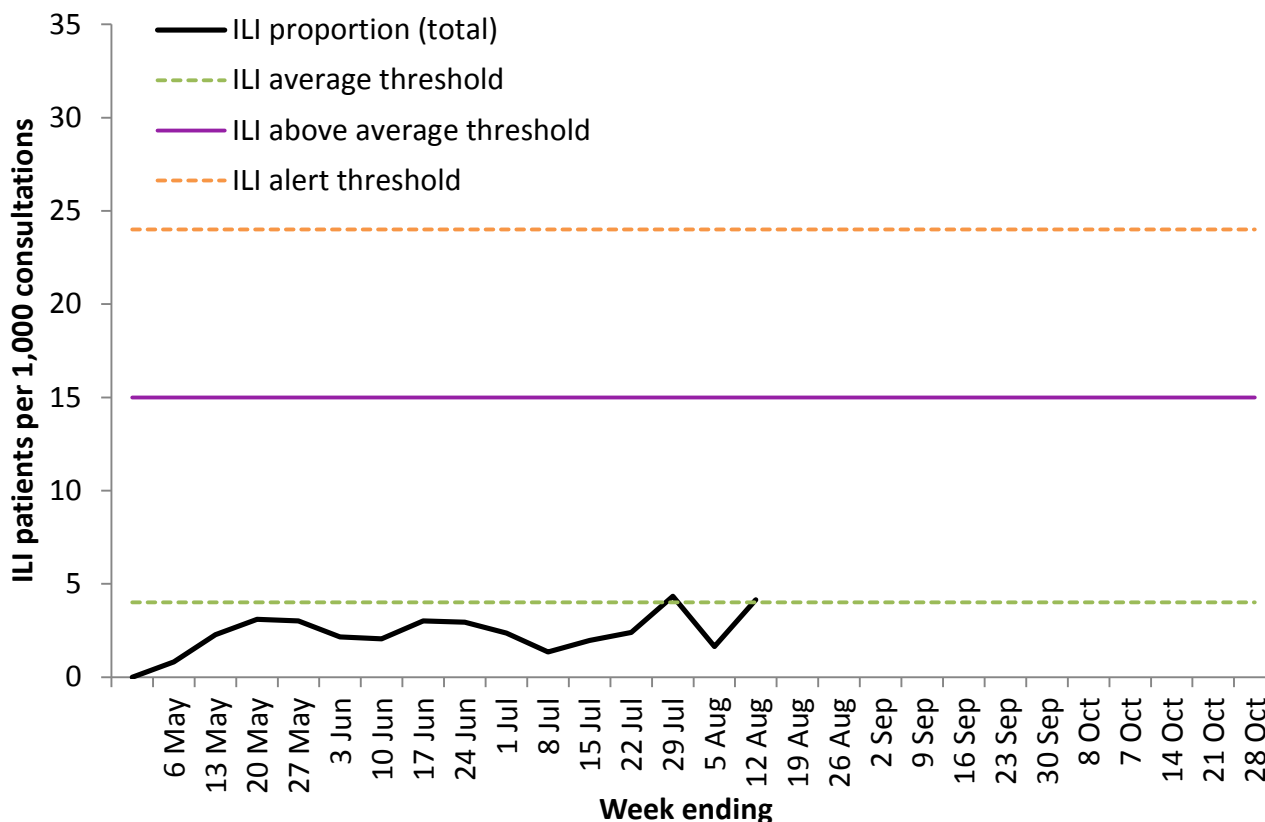
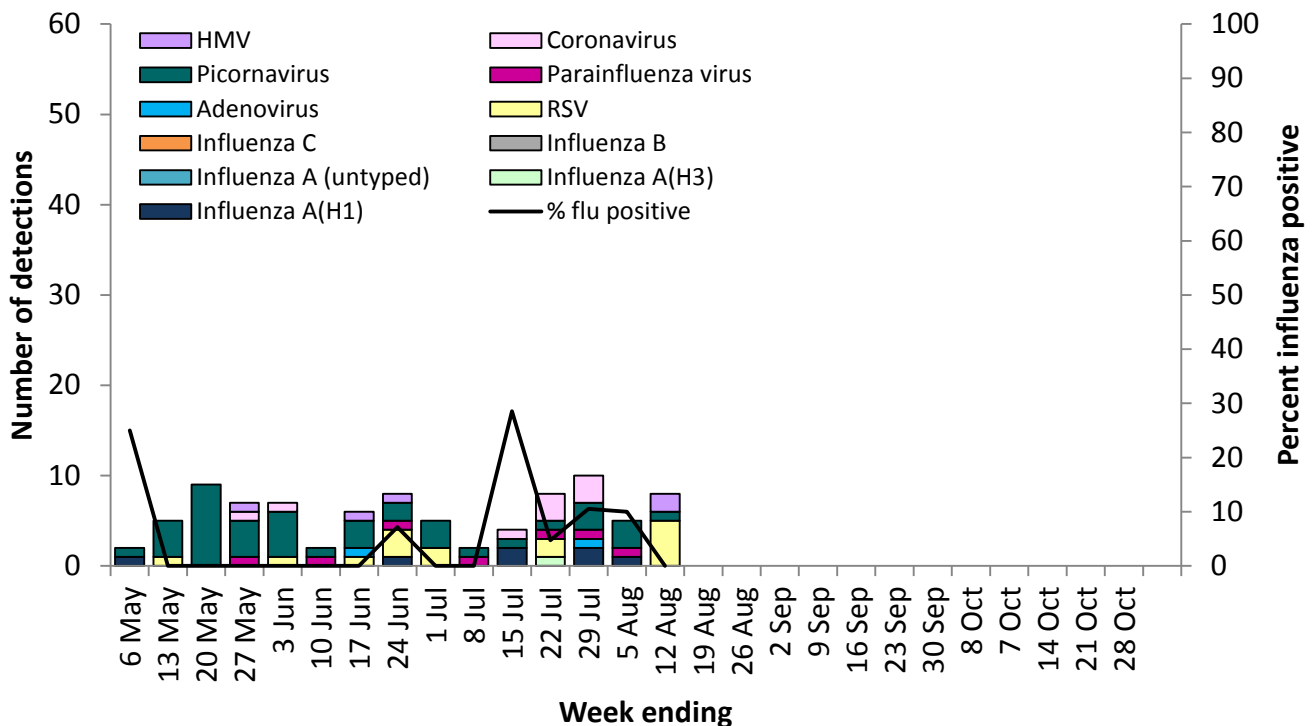


Figure 3. VicSPIN respiratory virus detections and percent influenza positive, Victoria, 2018



## Observations from other influenza surveillance systems

### Notified cases of laboratory confirmed influenza

- A total of 3,153 cases of laboratory confirmed influenza have been processed so far in 2018 compared with 13,294 in 2017, a 76% decrease (Figure 1).
- Cases notified year-to-date have been type A (58%) and type B (42%). Type A cases had a median age of 41 years and type B cases median age 46 years.

### World Health Organization Collaborating Centre for Reference and Research on Influenza

- The strains included in the 2018 quadrivalent influenza vaccine are: A/Michigan/45/2015 (H1N1)pdm09-like virus; A/Singapore/INFIMH-16-0019/2016 (H3N2)-like virus; B/Phuket/3073/2013-like virus with the quadrivalent vaccine including B/Brisbane/60/2008-like virus as well.
- One Victorian isolate was strain-typed by the WHO as A/Michigan/45/2015 (H1N1)pdm09.
- No isolate has shown resistance to zanamivir, among the 176 Australian isolates tested so far in 2018.