

Report No. 22: Week ending 30 September 2018

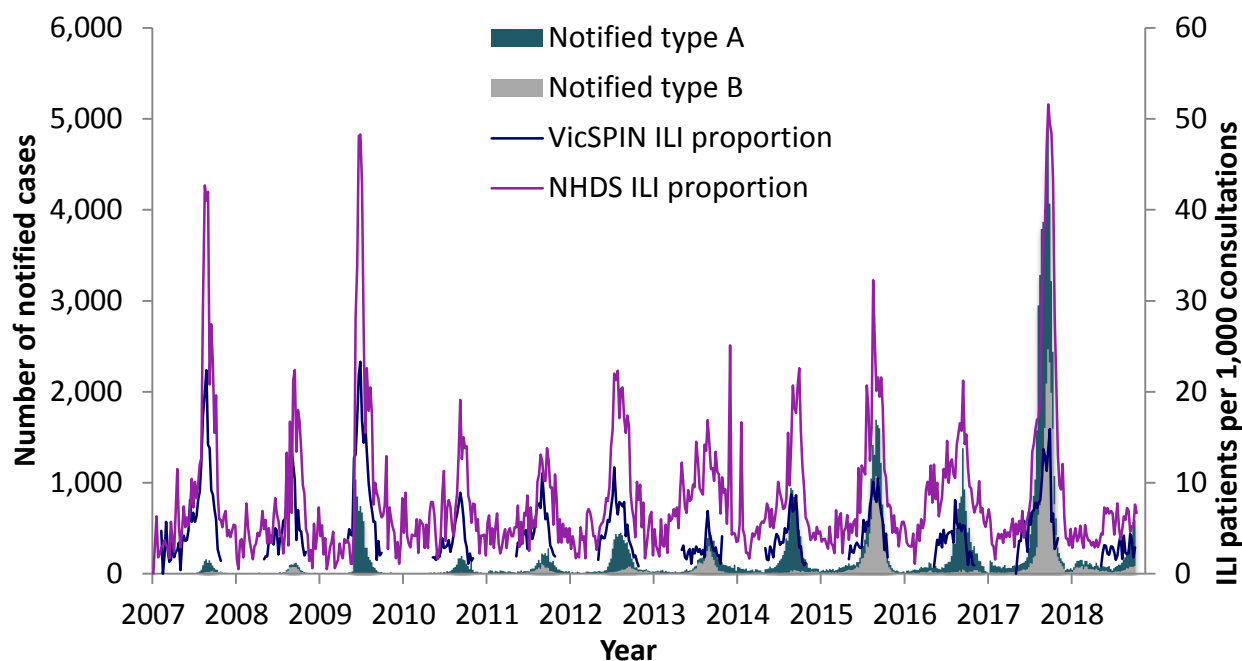
Overview: The 2018 influenza season so far

Influenza-like illness activity has fluctuated around the threshold between baseline and average since late July.

A total of 6,000 cases of laboratory confirmed influenza have been processed so far in 2018 compared with 41,852 in 2017, an 86% decrease (Figure 1). Year to date 68% of notifications have been type A (median age: 36 years) and 29% type B (median age: 38 years). Over the last four weeks the proportion of type A notifications has been higher than the year to date (84%, median age: 32 years), with a lower proportion of type B (16%, median age: 30 years).

Six swabs were received from VicSPIN this week, of which one was positive for influenza A(H1). Picornavirus remains the most commonly detected respiratory virus.

Figure 1. Routinely notified influenza cases and VicSPIN and National Home Doctor Service (NHDS) ILI consultation proportions, Victoria, 2007-2018



National Home Doctor Service (Victoria)

- The ILI proportion for the week was 6.7 ILI cases per 1,000 patients seen (Figure 1), remaining within the baseline activity threshold.

Victorian Sentinel Practice Influenza Network

- The total influenza-like illness (ILI) proportion measured by VicSPIN was below baseline activity levels with 2.9 ILI cases per 1,000 patients seen this week. (Figures 1 & 2).
- Six swabs were received from VicSPIN this week, of which one was positive for influenza A(H1N1). Picornavirus remains the most commonly detected respiratory virus.

Table 1. Summary of reporting from general practice sentinel sites, week ending 30 September 2018

	Total	Year-to-date
Number (%) of general practitioners notifying	87 (87%)	93 (93%)
Total patients seen	4,882	135,276
Total patients with ILI	14	356
Consultation rate for ILI (per 1,000 patients)	2.9	2.6
Number of specimens received	6	262
Number (%) positive for influenza	1 (17%)	23 (9%)

Figure 2. VicSPIN ILI consultation proportions, Victoria, 2018

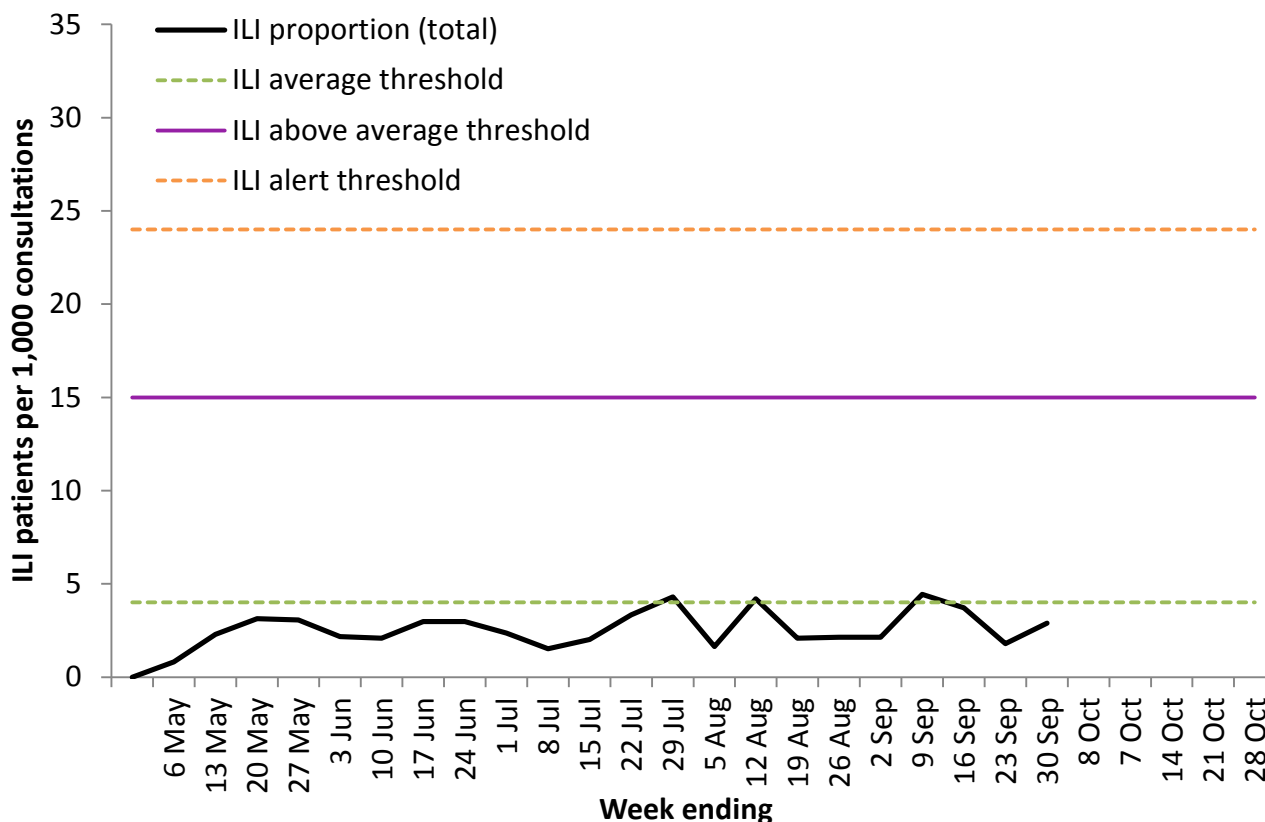
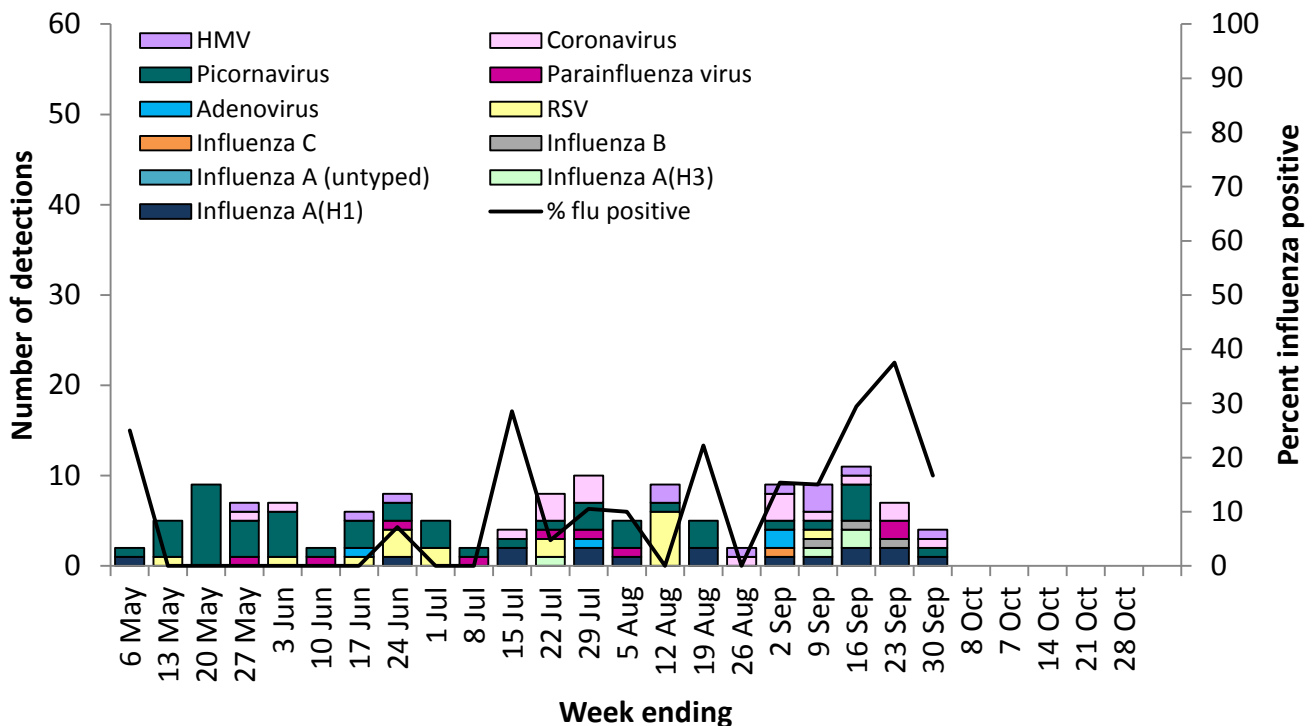


Figure 3. VicSPIN respiratory virus detections and percent influenza positive, Victoria, 2018



Observations from other influenza surveillance systems

Notified cases of laboratory confirmed influenza

- A total of 6,000 cases of laboratory confirmed influenza have been processed so far in 2018 compared with 41,852 in 2017, an 86% decrease (Figure 1).
- Year to date 68% have been type A (median age: 36 years) and 29% type B (median age: 38 years). In the last four weeks, 84% have been type A (median age: 32 years) and 16% type B (median age: 30 years).

World Health Organization Collaborating Centre for Reference and Research on Influenza

- The strains included in the 2018 quadrivalent influenza vaccine are: A/Michigan/45/2015 (H1N1)pdm09-like virus; A/Singapore/INFIMH-16-0019/2016 (H3N2)-like virus; B/Phuket/3073/2013-like virus with the quadrivalent vaccine including B/Brisbane/60/2008-like virus as well.
- Five Victorian isolates were strain-typed by the WHO, four as A/Michigan/45/2015 (H1N1)pdm09 and one as A/Singapore/INFIMH-16-0019/2016 (H3N2)-like virus.
- No isolate has shown resistance to zanamivir, among the 359 Australian isolates tested so far in 2018.