

## Report No. 23: Week ending 7 October 2018

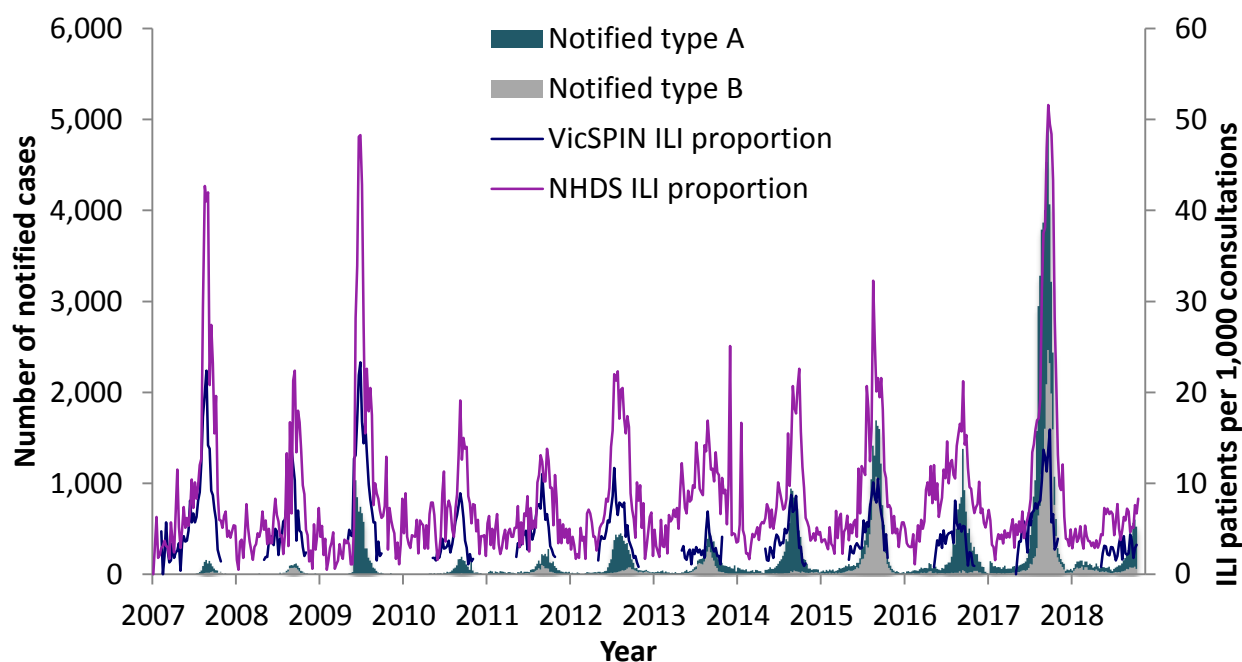
### Overview: The 2018 influenza season so far

**Influenza-like illness** activity remained within the baseline threshold for the last four weeks.

A total of 6,539 cases of laboratory confirmed influenza have been processed so far in 2018 compared with 44,297 in 2017, an 85% decrease. In the last four weeks, 85% of notified have been type A with a similar median age between type A (34 years) and type B (36 years).

Ten swabs were received from VicSPIN this week, one of which was positive for influenza A(H1N1), two for influenza A(H3N2) and one for influenza B. Picornavirus remains the most commonly detected respiratory virus.

*Figure 1. Routinely notified influenza cases and VicSPIN and National Home Doctor Service (NHDS) ILI consultation proportions, Victoria, 2007-2018*



### National Home Doctor Service (Victoria)

- The ILI proportion for the week was 8.3 ILI cases per 1,000 patients seen (Figure 1), remaining within the baseline activity threshold.

## Victorian Sentinel Practice Influenza Network

- The total influenza-like illness (ILI) proportion measured by VicSPIN was below baseline activity levels with 3.2 ILI cases per 1,000 patients seen this week. (Figures 1 & 2).
- Ten swabs were received from VicSPIN this week, of which one was positive for influenza A(H1), two were positive for influenza A(H3) and one was positive for influenza B. Picornavirus remains the most commonly detected respiratory virus.

Table 1. Summary of reporting from general practice sentinel sites, week ending 7 October 2018

	Total	Year-to-date
Number (%) of general practitioners notifying	87 (87%)	93 (93%)
Total patients seen	5,252	140,528
Total patients with ILI	17	373
Consultation rate for ILI (per 1,000 patients)	3.2	2.7
Number of specimens received	10	272
Number (%) positive for influenza	4 (40%)	27 (10%)

Figure 2. VicSPIN ILI consultation proportions, Victoria, 2018

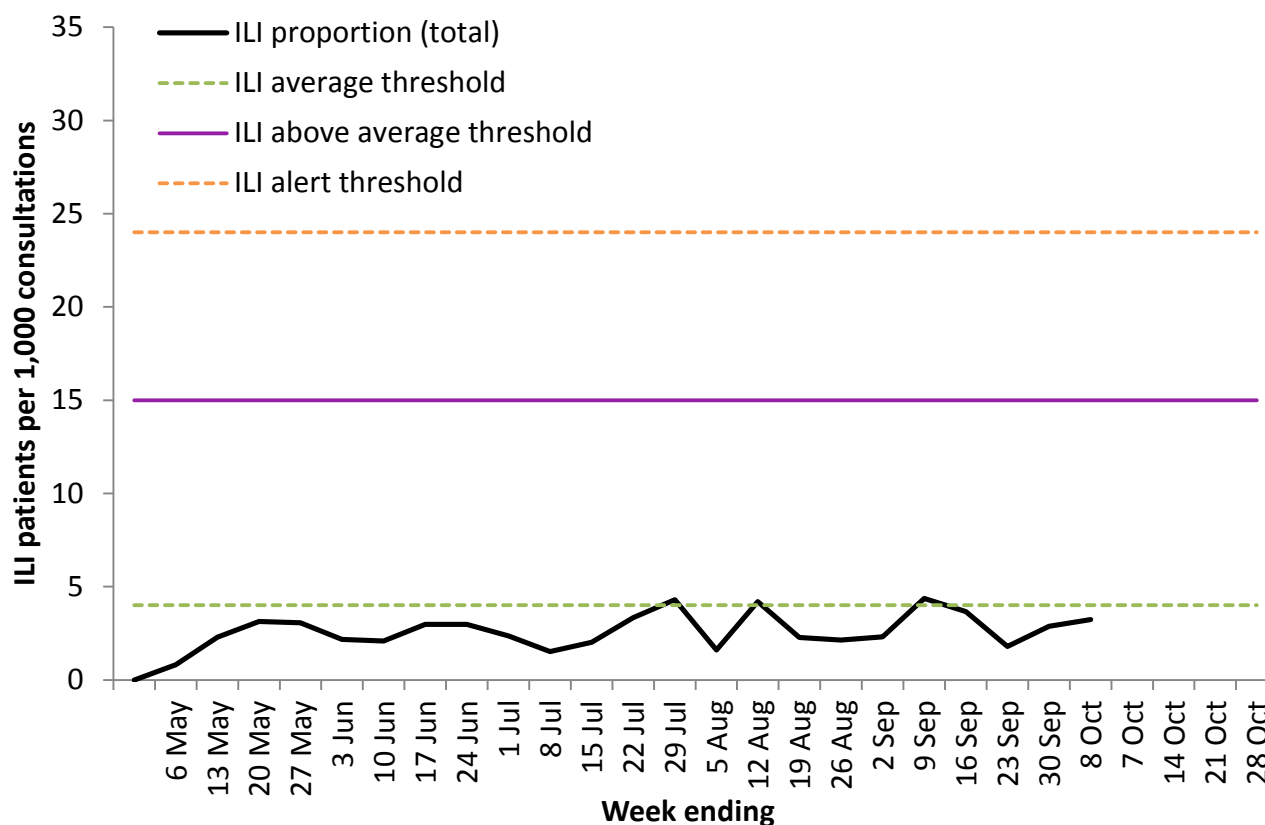
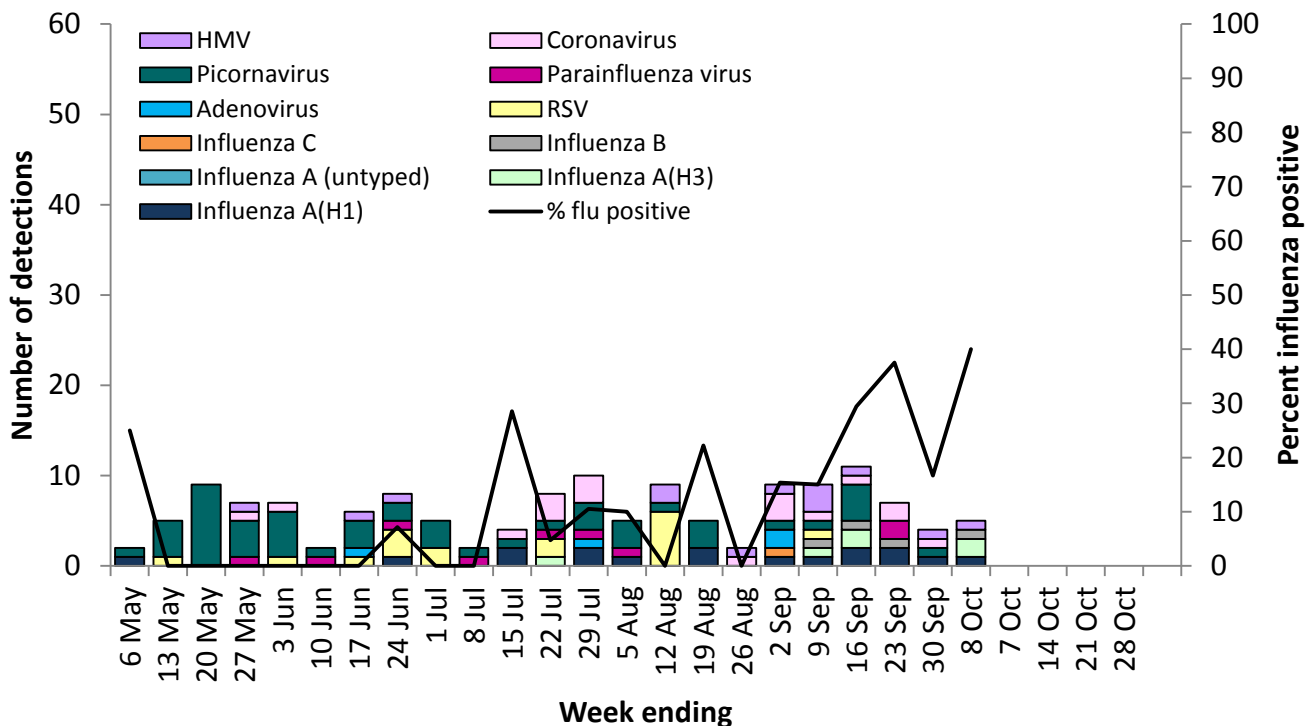


Figure 3. VicSPIN respiratory virus detections and percent influenza positive, Victoria, 2018



## Observations from other influenza surveillance systems

### Notified cases of laboratory confirmed influenza

- A total of 6,539 cases of laboratory confirmed influenza have been processed so far in 2018 compared with 44,297 in 2017, an 85% decrease (Figure 1).
- Year to date 72% have been type A (median age: 36 years) and 28% type B (median age: 44 years). In the last four weeks, 85% have been type A (median age: 34 years) and 14% type B (median age: 36 years).

### World Health Organization Collaborating Centre for Reference and Research on Influenza

- The strains included in the 2018 quadrivalent influenza vaccine are: A/Michigan/45/2015 (H1N1)pdm09-like virus; A/Singapore/INFIMH-16-0019/2016 (H3N2)-like virus; B/Phuket/3073/2013-like virus with the quadrivalent vaccine including B/Brisbane/60/2008-like virus as well.
- Thirteen Victorian isolates were strain-typed by the WHO, twelve as A/Michigan/45/2015 (H1N1)pdm09 and one as A/Singapore/INFIMH-16-0019/2016 (H3N2)-like virus.
- No isolate has shown resistance to zanamivir, among the 415 Australian isolates tested so far in 2018.