

## Report No. 24: Week ending 14 October 2018

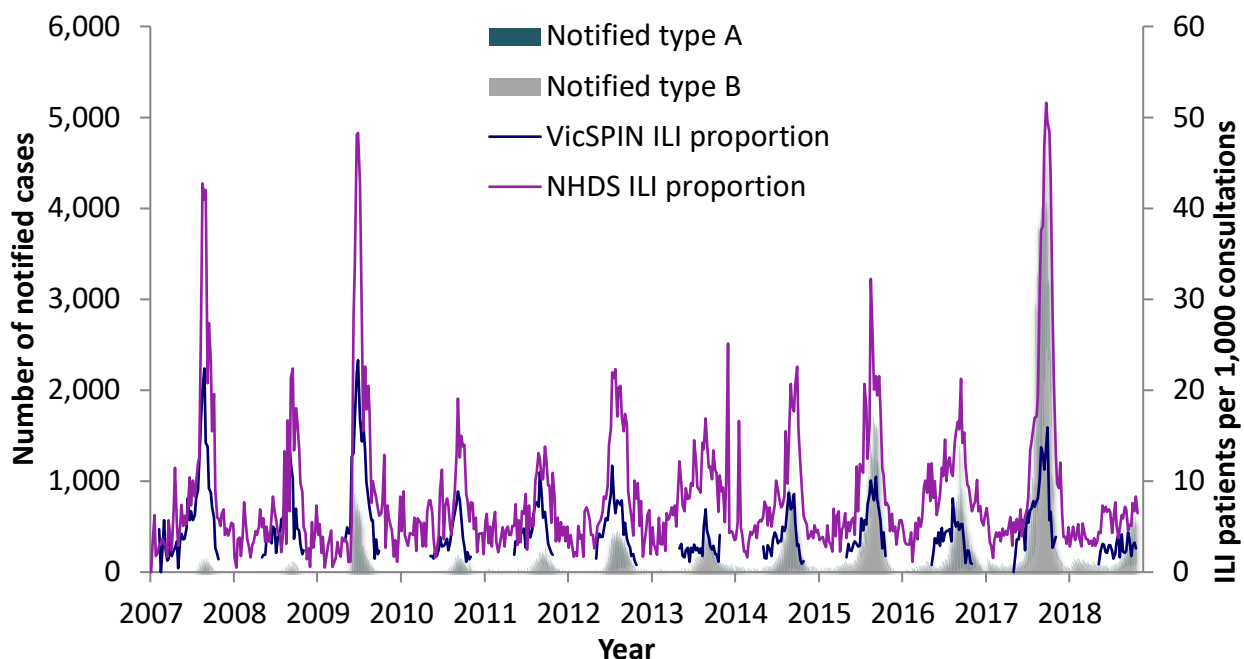
### Overview: The 2018 influenza season so far

Influenza-like illness activity remains within the **baseline** threshold.

A total of 7,239 cases of laboratory confirmed influenza have been processed so far in 2018 compared with 45,407 for the same time in 2017, an **84% decrease**. In the last four weeks, **87% have been type A** (median age: 36 years) and 13% type B (median age: 39 years).

Eleven swabs were received from VicSPIN this week, of which **five (46%) were positive for influenza**: one influenza A(H1), two influenza A(H3), one influenza A(untyped), and influenza B.

*Figure 1. Routinely notified influenza cases and VicSPIN and National Home Doctor Service (NHDS) ILI consultation proportions, Victoria, 2007-2018*



### National Home Doctor Service (Victoria)

- The ILI proportion for the week was 6.5 ILI cases per 1,000 patients seen (Figure 1), remaining within the baseline activity threshold.

## Victorian Sentinel Practice Influenza Network

- The total influenza-like illness (ILI) proportion measured by VicSPIN was below baseline activity levels with 2.6 ILI cases per 1,000 patients seen this week. (Figures 1 & 2).
- Eleven swabs were received from VicSPIN this week, of which one was positive for influenza A(H1), two were positive for influenza A(H3) one was positive for influenza A(untyped), and one was positive for influenza B.

*Table 1. Summary of reporting from general practice sentinel sites, week ending 14 October 2018*

|  | Total    | Year-to-date |
|--|----------|--------------|
| Number (%) of general practitioners notifying  | 83 (83%) | 93 (93%)     |
| Total patients seen                            | 5,696    | 146,224      |
| Total patients with ILI                        | 15       | 388          |
| Consultation rate for ILI (per 1,000 patients) | 2.6      | 2.7          |
| Number of specimens received                   | 11       | 283          |
| Number (%) positive for influenza              | 5 (46%)  | 32 (11%)     |

*Figure 2. VicSPIN ILI consultation proportions, Victoria, 2018*

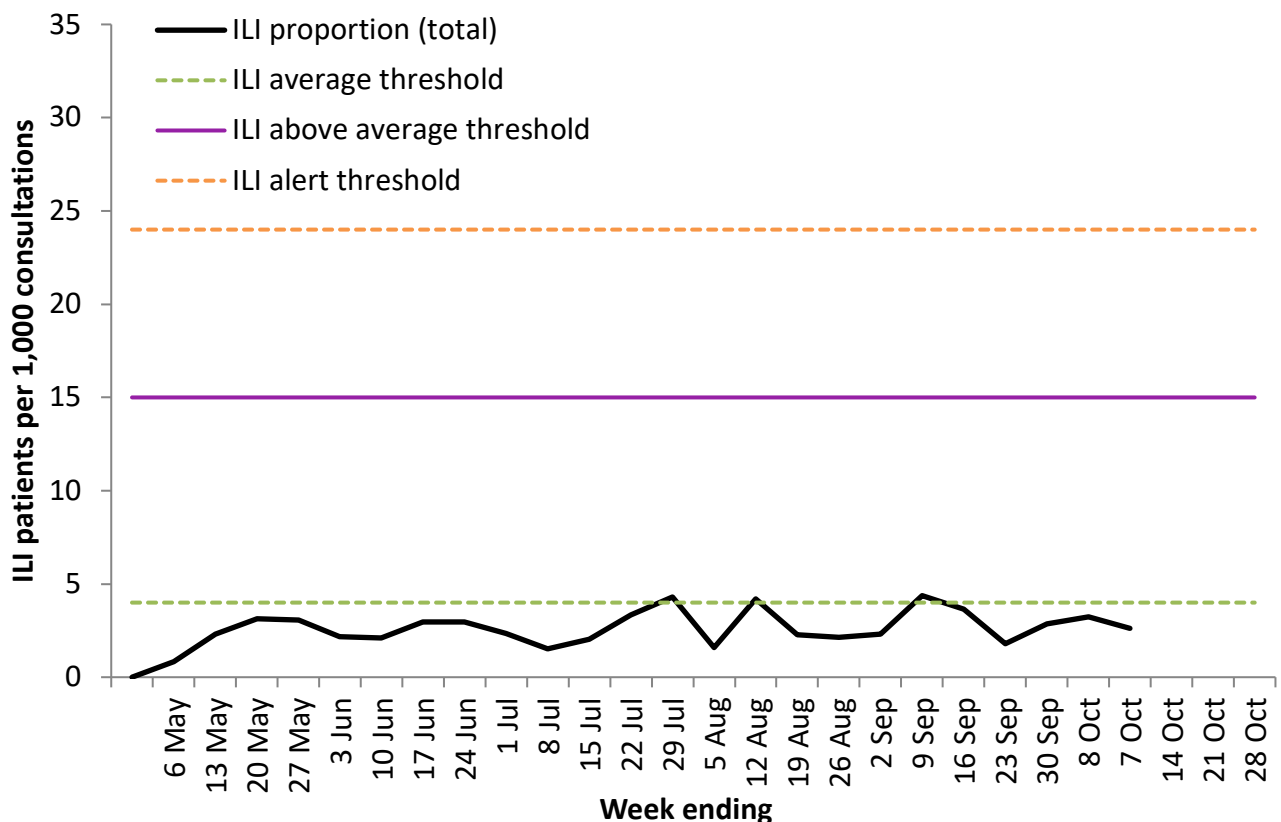
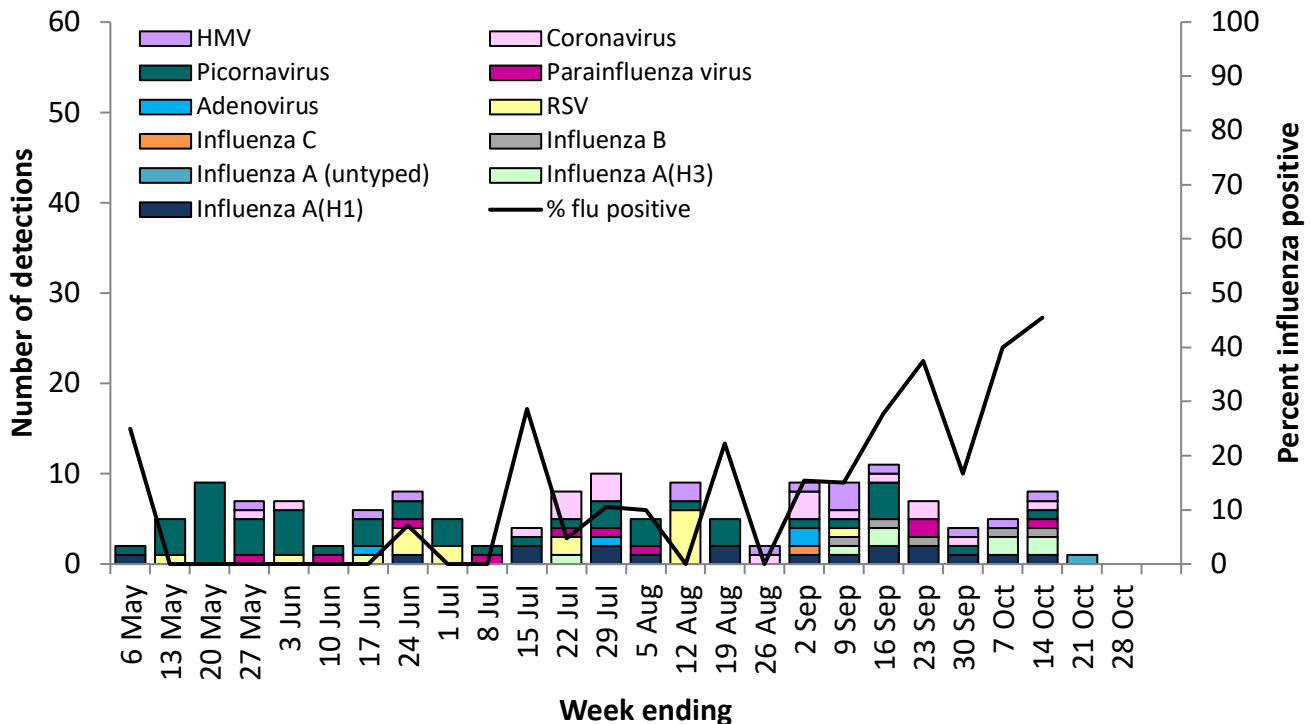


Figure 3. VicSPIN respiratory virus detections and percent influenza positive, Victoria, 2018



## Observations from other influenza surveillance systems

### Notified cases of laboratory confirmed influenza

- A total of 7,239 cases of laboratory confirmed influenza have been processed so far in 2018 compared with 45,407 in 2017, an 84% decrease (Figure 1).
- Year to date 73% have been type A (median age: 36 years) and 27% type B (median age: 43 years). In the last four weeks, 87% have been type A (median age: 36 years) and 13% type B (median age: 39 years).

### World Health Organization Collaborating Centre for Reference and Research on Influenza

- The strains included in the 2018 quadrivalent influenza vaccine are: A/Michigan/45/2015 (H1N1)pdm09-like virus; A/Singapore/INFIMH-16-0019/2016 (H3N2)-like virus; B/Phuket/3073/2013-like virus with the quadrivalent vaccine including B/Brisbane/60/2008-like virus as well.
- Sixteen Victorian isolates were strain-typed by the WHO, thirteen as A/Michigan/45/2015 (H1N1)pdm09 and two as A/Singapore/INFIMH-16-0019/2016 (H3N2)-like virus.
- No isolate has shown resistance to zanamivir, among the 540 Australian isolates tested so far in 2018.