

Report No. 9: Week ending 7 July 2019

Overview: The 2019 influenza season so far

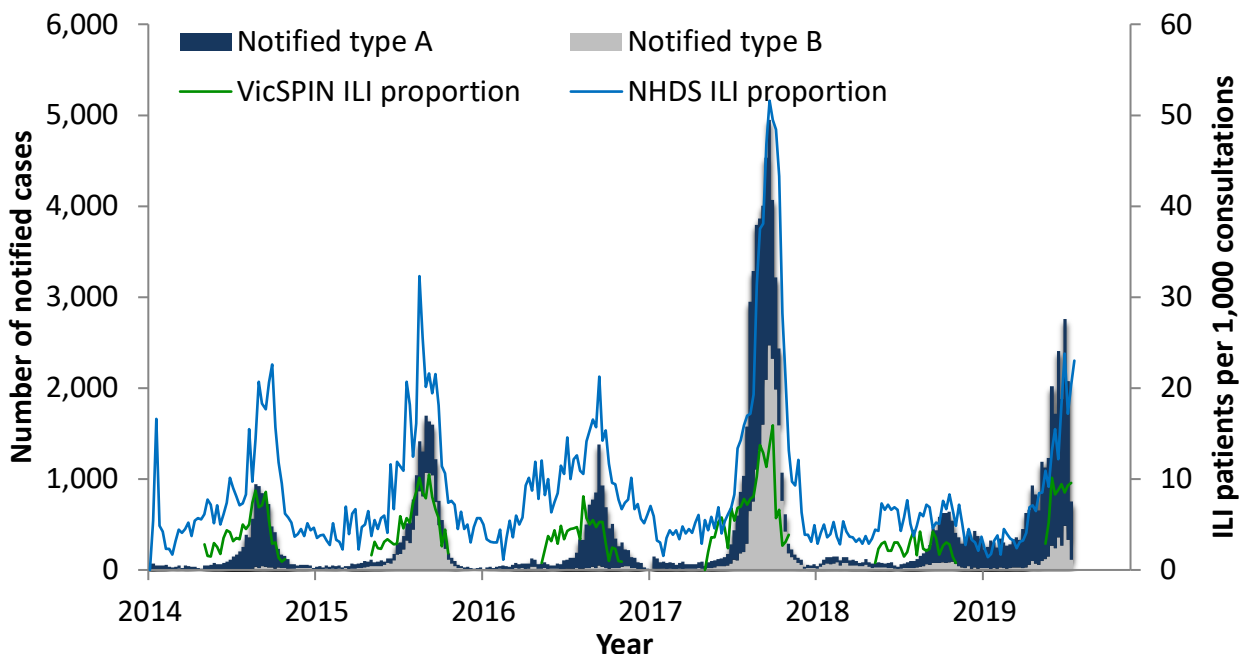
Influenza-like illness activity remains within the **average** threshold, although higher than at the same time in previous years.

The number of **notified cases of laboratory confirmed influenza is now over nine times higher than at the same time in 2018**. The majority of notified cases are **type A (88%)**, and type A cases are **older than notified type B** cases; 34% of type B cases are aged less than 10 years compared to 22% of type A cases, and 16% of type A cases are aged 65 years and older compared to 4% of type B cases.

Forty-one swabs were received from VicSPIN this week, of which **39% were positive for influenza**.

To date, influenza A(H3) was co-detected with A(H1N1)pdm09 in one case. In four additional cases, influenza was co-detected with another respiratory virus.

Figure 1. Routinely notified influenza cases and VicSPIN and National Home Doctor Service (NHDS) ILI consultation proportions, Victoria, 2007-2019



National Home Doctor Service (Victoria)

- The ILI proportion for the week increased from 20.3 the previous week to 23.0 ILI cases per 1,000 patients seen (Figure 1).
- ILI activity remains within the average activity threshold range of 10-35 ILI cases per 1,000 patients seen.

Victorian Sentinel Practice Influenza Network

- The total influenza-like illness (ILI) proportion measured by VicSPIN has remained steady and is within the average activity level, with 9.6 ILI cases per 1,000 patients seen this week. This is higher for the current week than at the same time in the last two years. (Figures 1 & 2).
- Forty-one swabs were received this week, of which 16 (39%) were positive for influenza (eleven of A(H3); five B). RSV, H1N1 and coronavirus were detected from one swab each. (Figure 3).

Table 1. Summary of reporting from general practice sentinel sites, week ending 7 July 2019

	Week	Year-to-date
Number (%) of general practitioners reporting	84 (99%)	
Total patients seen	5,827	57,086
Total patients with ILI	56	441
Consultation rate for ILI (per 1,000 patients)	9.6	7.7
Number of specimens received	41	360
Number (%) positive for influenza	16 (39%)	116 (32%)

Figure 2. VicSPIN ILI consultation proportions, Victoria, 2017 - 2019

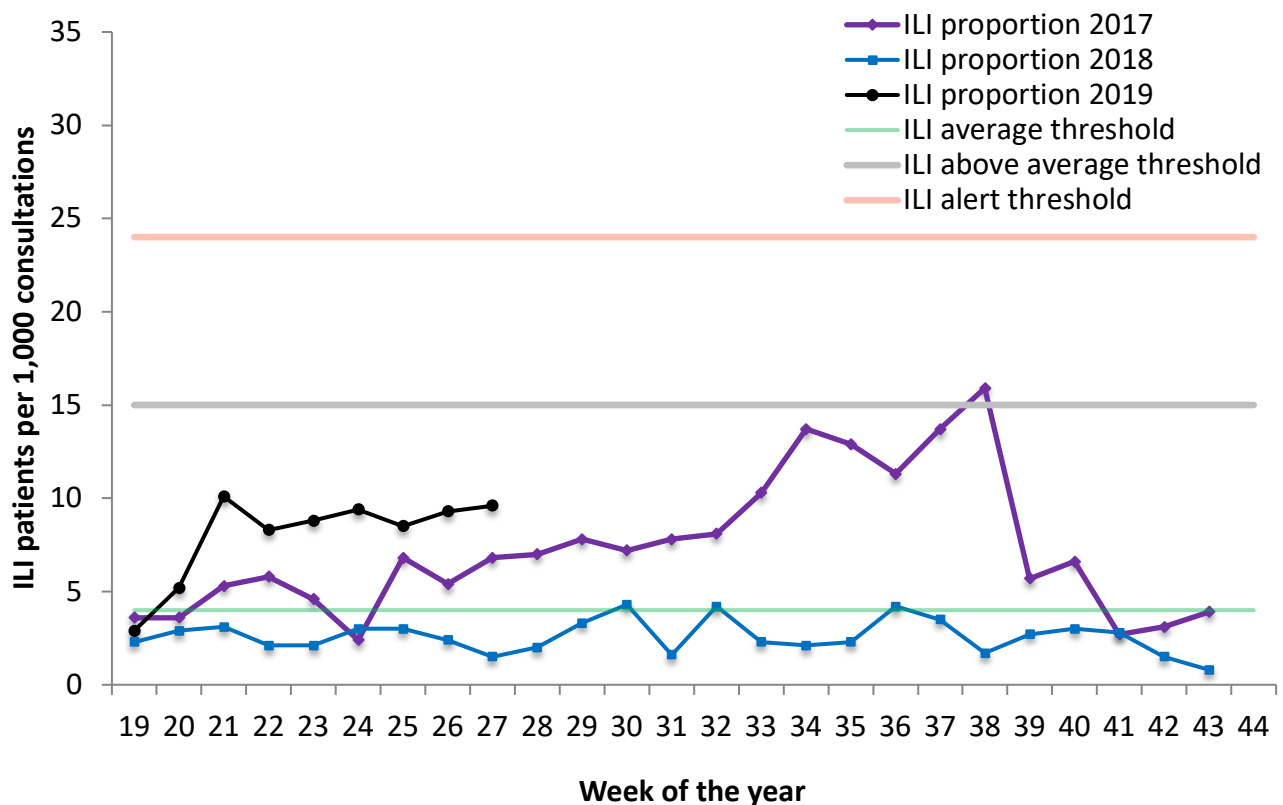
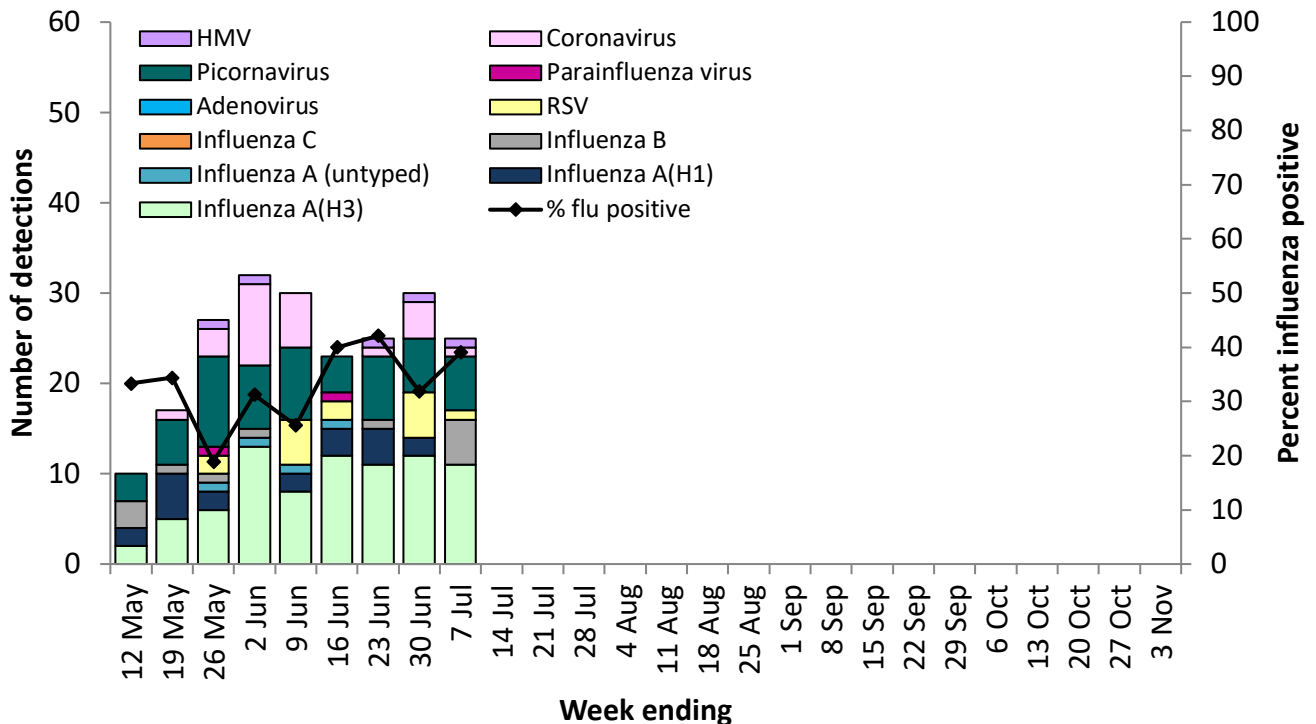


Figure 3. VicSPIN respiratory virus detections and percent influenza positive, Victoria, 2019



Observations from other influenza surveillance systems

Notified cases of laboratory confirmed influenza

- The number of notified cases of laboratory confirmed influenza appears lower than last week, at 758 cases compared with 2,082 cases in the previous week, however this number is subject to change as notifications are processed and entered.
- A total of 24,736 cases of laboratory confirmed influenza have been processed so far in 2019, over nine times the 2,656 cases notified at the same time in 2018 (Figure 1).
- Year to date, 88% of notified cases have been type A (22% aged less than 10 years and 16% aged 65 years and over) and 12% have been type B (34% aged less than 10 years and 4% aged 65 years and over).

World Health Organization Collaborating Centre for Reference and Research on Influenza

- The strains included in the 2019 quadrivalent influenza vaccine are: A/Michigan/45/2015-Like (H1N1)pdm09 virus; A/Switzerland/8060/2017-like (H3N2) virus; B/Colorado/06/2017-like virus with the quadrivalent vaccine including B/Phuket/3073/2013-like virus as well.
- A total of 144 Victorian isolates have been strain-typed by the WHO to date: 84 as A/Michigan/45/2015-Like; one as A/Michigan/45/2015-Low Reactor; 33 as A/Switzerland/8060/2017-Like; 10 as A/Switzerland/8060/2017-Low Reactor; ten as B/Colorado/6/2017-Like; five as B/Colorado/6/2017-Low Reactor; and one as B/Phuket/3073/2013-Like.
- No isolate has shown resistance to oseltamivir or zanamivir, among the 827 Australian isolates tested so far in 2019.